

WINMATE

www.winmate.com



HEALTHCARE

Integrated Digital
Healthcare Solutions

About Winmate

Founded in 1996, Winmate Inc. is a pioneer in rugged computing technology. Winmate has provided business leaders worldwide with reliable, robust solutions for the most challenging industrial conditions for over two decades. From R&D to manufacturing to in-house testing, Winmate Inc. manages the entire product development process with ready-made products available for quick deployment. Today Winmate's innovative approach has helped countless enterprises at every level with equipment automation and seamless Industrial Internet of Things (IIoT) integration.

From the industrial display, panel PC, HMI, embedded systems to rugged mobile devices, Winmate caters to industries ranging from transportation and logistics to marine and military, railway, oil, and gas, and provides customization services to create a unique solution for specific customer requirements.

The Winmate Difference

Innovation and Ruggedness

With innovation and ruggedness, our products are designed to meet the requirements of vertical markets' environmental standards.

Engineering Intelligence

We are committed to maintaining the highest standards in engineering excellence to ensure our products deliver reliability, durability, and optimized performance.

Quality Commitment

Quality assurance and entire engineering processes are conducted in-house. It is why we invested significantly in our state-of-the-art testing facility with additional global support.

“
**INNOVATIVE
TECHNOLOGY FOR
OPERATIONAL
EXCELLENCE.**
”

Efficiency

Our team is committed to efficiency and maintaining the shortest possible development cycles. The whole development process is conducted in-house to achieve the market advantage in speed and quality from design to testing.

Reliability

Reliability, service, and support are part of our foundation. Every product scrutinizes industrial standards testing to verify electrical, mechanical, thermal, and firmware design performance.

Customized Solutions

Years of experience allow Winmate to offer customized solutions for different applications.

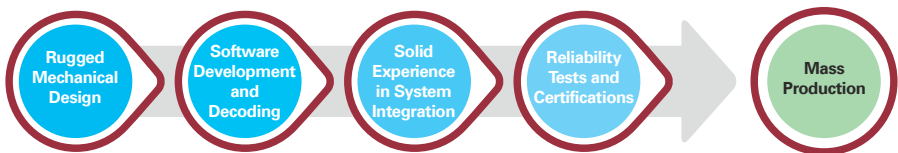
From product design to accessories, our engineering team designs and support the system integration process.

- CUSTOMIZED CONFIGURATION
- CUSTOM OS IMAGE
- CUSTOM BIOS
- ENCLOSURE DESIGN
- PERIPHERALS AND OPTIONS
- CUSTOM-DESIGNED ACCESSORIES

Technical Know-How

We understand that access to cutting-edge solutions purposely built for their applications is imperative for enterprises operating in rugged or potentially hazardous environments. As a result, Winmate locates its resources from project research and design, software development and customization, product verification and validation, and in-house testing to research and implement the latest technologies available.

The latest technologies we deploy for our rugged products:



- Dry and wet optical bonding
- Panel enhancement for sunlight readability
- Anti-reflection (AR) and anti-glare (AG) glass protection coating
- Light sensor
- Hyper dimming
- Electronic potting
- Touch screen integration: projected capacitive, resistive, or SAW touch
- Waterproof enclosure
- Military EMI and mesh coating
- Wireless capabilities
- Data capture devices integration
- Defroster for ultra-low temperature environments
- Stainless steel SUS 316/ AISI 316
- Shock and vibration resistance
- Wide-range operation temperature

Healthcare Solutions

Overview

Technology has long played an imperative role in streamlining hospital operations and improving patient care. In hospital environments, performance, reliable and accurate image reproduction are imperative. From medical images to patient data, the hospital environment is a complex ecosystem that requires advanced technology to keep it running smoothly.

Our medical imaging solutions include :

- Surgical and clinical display
- Durable design and know-how in medical images visualization

Expand your medical and healthcare business with the Winmate. As a technology solutions leader, Winmate values our partners. As a partner, you are a vital instrument in ensuring the customer needs are understood and that their expectations are exceeded every time.

Technology

Certification & Quality Approvals

Winmate developed and implemented a quality management system based on a process management approach that has demonstrated its ability to provide consistent products that meet customer and applicable regulatory requirements.

The quality system complies with the international standard ISO 9001:2008 and the standards which apply to related industries.

Winmate achieved ISO 13485:2016 and EN ISO 13485:2016 certification for its' design, development, production, installation, and servicing of medical devices. This achievement also enables Winmate to expand its medical-related product line, and create new opportunities for our original design manufacturer (ODM), original equipment manufacturer (OEM), and rebranding partners.



What does this mean for you? Winmate's certification confirms any portable panel PCs and mobile tablets we develop for use in the Healthcare industry are safe and meet all regulatory design requirements.



YOUR HEALTHCARE APPLICATION. OUR RUGGED COMPUTING SOLUTION.

Industrial Challenges

- **Real Time Information**

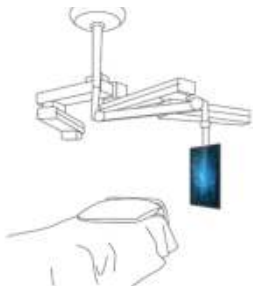
The trend in Healthcare applications is to get patients' information in real time for a quick response. Cost saving, online data available everywhere and reduced loading of personnel are the key benefits of this solution. Physicians, clinicians, nurses and ambulance workers who take care patients can focus on helping them, instead working with papers and reports.

- **Reliable and Accurate Image Reproduction**

In hospital environments, performance, reliable, and accurate image reproduction are imperative. From Healthcare images to patient data, the hospital environment is complex ecosystem that requires advance technology to keep it running smoothly.

- **Complex Environment**

The need is to reduce cable cluttering and maintenance downtime.



Patient Monitoring Display



Surgical Display



Patient Identification and Report

Application Story

Patient Care



Background

Portable and mobile devices dive into hospital environments. The ability to gather and access information with the touch of a fingertip, and carry it around wherever you go is invaluable for those working in this sector. Portable and mobile computers allow paramedics and nurses to instantly access and keep patient records. They use the tablets to schedule patient checkups in both outpatient and inpatient wards, issue and authorize prescriptions, record and transmit patient data in multimedia format and use instant live video conferencing and chat features to enhance collaboration. With technological advancements healthcare professionals can to provide better patient care.

Core products

- 10.1" Healthcare Tablet Computer M101P-ME

Main Challenges

- Expansion adapter module design for USB connection
- Must be able to work with vehicle docking
- Customized housing with anti-bacterial material

Why Winmate

- Integrated barcode scanner for data collection
- Medically certified vehicle docking
- Medically certified IEC/EN 60601-1, IEC 60601-1-2

“ **MOBILE HEALTHCARE TECHNOLOGIES FOR BETTER PATIENT CARE.** ”



Application Diagram: Patient Care

Application Story

Digital Operation Room



Background

Healthcare rugged tablet assists communication between the operating table and other divisions in the medical center and clinical units. The tablet, combined with a specialized software program, supports the e-Healthcare to monitor the surgery and facility management.

Winmate healthcare-grade tablet with a 10.1" screen to guarantee optimum visibility. Various Wireless connectivity options and compact form-factor for mobility. It is easy to use and facilitates faster data transfer from and to the surgery room for information management, consultation, or educational purposes.

Core products

- 10.1" Healthcare Tablet Computer M101P-ME

“ FUTUREPROOF
YOUR HEALTHCARE
IOT. ”

Main Challenges

- Examination Camera HD
- IP65 water/ dust rating
- Tough scratch-resistant chemically strengthen glass touch-screen
- Sunlight readable, high-contrast 10.1" LCD
- Dual long-life hot-swappable rechargeable batteries

Why Winmate

- Ruggedized, state-of-the-art tablet
- Medically certified vehicle docking



Application Diagram: Digital Health

Application Story

Patient Care



Background

Managing patient care in hospital rooms requires seamless access to medical records, medication schedules, and real-time vital signs. Traditionally, nurses and doctors relied on desktop computers or paper charts, which limited mobility and access to real-time updates. The hospital needed a mobile solution that allowed healthcare professionals to access patient information quickly, make updates on the go, and ensure patient data security, all while maintaining hygiene and durability in a clinical setting.

Core products

- 10.1" Healthcare Rugged Tablet PC with Intel® Celeron® N6211

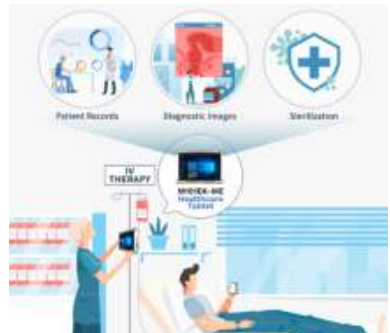
Main Challenges

- Limited Access to Real-Time Data
- Mobility and Durability
- Hygiene and Durability
- Data Security

Why Winmate

- Customizable Solutions
- Proven Reliability
- Designed with Healthcare Needs
- Global Reach

“**REDEFINING PATIENT CARE WITH STERILITY AND EFFICIENCY**”



Application Diagram: Patient Care

10.1" Healthcare Rugged Tablet PC M101EK-ME



“

**DROP-RESISTANT.
MOBILE. RUGGED.**

”

- Intel® Elkhart Lake Celeron® N6211 Processor
- 10.1" 1920 x 1200 IPS LED Panel with direct optical bonding
- Lightweight, low power consumption, rugged, IP65 waterproof and dustproof
- Removable battery with hot-swap function for all day productivity

Stylus, glove, and wet-touch modes fulfilling multiple medical operations

In compliance with IEC/EN 60601-1, IEC/EN 60601-1-2, UL 60601-1

Housing enhanced with antimicrobial properties

USB Type-C port supports power delivery

Hot-Swappable Battery for Continuous Operation

Multifunctional Display for Diverse Conditions

Custom Configuration

Up to
8 GB

Memory

Up to
512 GB

Storage



Barcode
Reader



Smart Card
Reader



Micro HDMI



Expansion
Port

Application



Operating Room Control

ENHANCING EMERGENCY CARE EFFICIENCY

The M101EK-ME rugged tablet transformed hospital emergency operations, enabling real-time patient data access and streamlined workflows.

Its durable design and medical-grade certifications ensured reliable performance in critical, fast-paced environments.

10.1" Windows Healthcare Rugged Tablet M101P-ME

Custom Configuration



Memory



Storage



WWAN



Smart Card
Reader



Barcode
Reader



HF RFID
Reader



Expansion
USB RS232



“

**DROP-RESISTANT.
MOBILE. RUGGED.**

”

- 10.1", 1920 x 1200 IPS LED Panel
- Intel® Pentium® N4200 1.1 GHz, up to 2.5 GHz
- Windows 10 IoT Enterprise

CE, FCC, UL, PTCRB, Verizon, IEC/EN 60601-1, IEC/
EN 60601-1-2, UL 60601-1

Housing enhanced with antimicrobial properties

Long battery life

USB 3.0 (Type A) connector, USB 3.0 (Type C)

Optional 1D/2D barcode scanner to scan medications
or wristbands (Optional)

Lightweight, rugged, IP65 waterproof and dustproof

MIL-STD-810G shock, vibration and drop resistance

Application



Patient Care

IMPROVES EFFICIENCY AND SAVES TIME FOR REGULAR CHECKUPS

With a 10.1-inch tablet computer M101P-ME, nurses can easily access patient information any time from any place. If needed, the M101P-ME can also retrofit medication schemes and doctor prescriptions.

10.1" Android Healthcare Rugged Tablet M101Q8-ME



“ **DROP-RESISTANT.
MOBILE. RUGGED.** ”

- 10.1", 1920 x 1200 TFT LCD Display
- Qualcomm® Snapdragon™ 660, Octa-core up to 2.2 GHz
- Android 9.0

CE, FCC, IC IEC 60601-1, IEC 60601-1-2, EN 60601-1
ANSI/AAMI ES 60601-1

Housing enhanced with antimicrobial properties

3 GB RAM + 32 GB eMMC

Optional 1D/2D barcode scanner

8 MP front camera, 13 MP rear camera with autofocus

Lightweight, rugged, IP65 waterproof and dustproof

MIL-STD-810G shock, vibration and drop resistance

Custom Configuration



Barcode Reader Hotswap Battery

Application



Intelligent nurse station

**PROVIDE MEDICAL
ORGANIZATIONS WITH
EASIER ACCESS TO
IN-HOUSE SCHEDULING
AND PLANNING**

Along with a competent registered nurse terminal, health professionals may react and also check to a variety of various information input aspects.

Custom Configuration

Up to
64 GB

Memory



Bluetooth

Up to
2 TB

Storage



WLAN

21.5" Healthcare Panel PC W22IT7T-PTA3-ME



“ A HEALTHIER FUTURE WITH DATA-DRIVEN CARE ”

- Intel® Core™ i5-1135G7 2.4 GHz (turbo to 4.2GHz) Processor
- Projected Capacitive Multitouch
- Fanless cooling system and ultralow power consumption
- Front IP65 for protection against water and dust
- A true flat, easy to clean front surface with edge to edge design
- Housing with antimicrobial properties

Medical-Grade certification, ensures safe use in healthcare environments with anti-bacterial housing.

High performance powered by Intel® Core™ i5 processor for smooth and efficient operation.

Durable design resistant to dust, water, and cleaning chemicals, ideal for frequent sanitization.

Application



Patient Monitoring

PIONEERING HEALTHCARE EXCELLENCE

The Panel PCs provide healthcare professionals with immediate access to vital patient data, including heart rate and blood pressure. Their user-friendly touchscreens enable quick and accurate data interpretation, empowering healthcare teams for top-tier patient monitoring.

24" Healthcare Panel PC W24IT7T-PTA2-ME



“ANTIMICROBIAL EXCELLENCE FOR A HEALTHIER TOMORROW”

- Intel® Core™ i5-1135G7 2.4 GHz (turbo to 4.2GHz) Processor
- Projected Capacitive Multitouch
- Fanless cooling system and ultralow power consumption
- Front IP65 for protection against water and dust
- A true flat, easy to clean front surface with edge to edge design
- Housing with antimicrobial properties

Built with antibacterial properties to enhance hygiene in healthcare applications.

Features an edge-to-edge display for easy cleaning and preventing dust accumulation.

Includes multiple interfaces such as USB, serial ports, and Ethernet for versatile connectivity.

Complies with IEC/EN 60601-1 standards, ensuring safety and reliability in medical environments.

Custom Configuration

Up to
64 GB

Memory

Up to
2 TB

Storage



Bluetooth



WLAN

Application



Operating Room Control

STREAMLINING HEALTHCARE WITH PRECISION

Winmate Panel PCs serve as the control nerve center, enabling surgeons and medical teams to orchestrate intricate procedures, access patient data, and monitor vital signs seamlessly. Their fanless, silent operation ensures a sterile environment while delivering critical information.

15.6" Multi-Touch Color Surgical Display W15L100-PTA3-ME



“ **FOR MEDICAL IMAGING
AND CLINICAL DATA
VISUALISATION.** ”

- 15.6", 1920 x 1080 resolution
- Projected capacitive multi-touch
- Housing with antimicrobial properties
- Front IP65 Multi-Touch Color Surgical Display

Application



Diagnosis and Clinical Review

SHARP & BRIGHT IMAGES

Winmate 15.6" healthcare display allows monitoring patient information and supports various mounting options for added convenience of diagnosis and clinical review.

IEC/EN 60601-1
IEC 60601-1-2:2014/AMD:2020
IEC60601-1-6 +IEC62366
EN 60601-1-2:2015/A1:2021
EN55032/35, FCC Part15B, ICE-003
ISO14971
RoHS-2, REACH, WEEE compliant

VGA input and HDMI input

Stylish and elegant design

Support VESA mount

32" Multi-Touch Color Surgical Display W32L100-PTA1



“ **PIXEL-PERFECT IMAGES FOR CLINICIANS.** ”

- 32", 3840 x 2160 resolution
- Projected capacitive multi-touch
- Bottom side keys x 5
- Front IP65

IEC/EN 60601-1
IEC 60601-1-2:2014/AMD:2020
IEC60601-1-6 +IEC62366
EN 60601-1-2:2015/A1:2021
EN55032/35, FCC Part15B, ICE-003
ISO14971
RoHS-2, REACH, WEEE compliant

Support VGA, DVI, HDMI, DP variety signal input

Fanless and ventless design, easy-to-clean,
multi-touch color surgical display

Support IR remote controller

Housing with antimicrobial properties

Support VESA mount

Application



Diagnosis and Clinical Review

OPTIMIZED DISPLAY SOLUTIONS TO IMPROVE VISUALIZATION FOR AID IN CRITICAL DIAGNOSIS

The W32L100 series display support VAG and HDMI offers a user-friendly interface designed to improve workflow for healthcare environments.

32" Multi-Touch Color Surgical Display W32L100-PTA3-ME



“ **NEXT LEVEL OF
HEALTHCARE IMAGING.** ”

- 32", 1920 x 1080 resolution
- VESA mount
- Front IP65
- Bottom side keys x 5

Compliance IEC 60601-1:2005 + A1:2012 (Ed. 3.1),
IEC 60601-1-6:2010 + A1:2013 (Ed. 3.1),
IEC 62366:2007 + A1:2014 (Ed. 1.1)
EN 60601-1-2:2015
ANSI/AAMI ES 60601-1:2005/A1:2012 and C1:2009/
(R)2012 and A2:2010/
(R)2012 CAN/CSA-C22.2 No.60601-1:14
EN 60601-1-2:2015, IEC 60601-1-2:2014 (Ed. 4.0)
EN 55032/EN 55024, FCC part 15B
EN 62368-1: 2014
RoHS-2, REACH, WEEE compliant

Support VGA, HDMI signal input

Fanless and ventless design, easy-to-clean medical grade monitors

Support VESA mount

Application



Surgical Display

32" SURGICAL DISPLAY SUPPORT VESA MOUNT AND EASY TO CLEAN

The 32" surgical display ensure the precise imagery remains unchanged from the video source to the display and allows healthcare providers to have the most accurate imaging.

32" SDI Multi-Touch Color Surgical Display W32L100-PTA1-SDI



“ PROJECTED CAPACITIVE TOUCH WITH 4K UHD RESOLUTION. ”

- 32", 4K UHD 3840 x 2160 resolution
- Projected capacitive touch
- VESA mount
- Bottom side keys x 5
- Front IP65

Compliance IEC 60601-1:2005 + A1:2012 (Ed. 3.1),
IEC 60601-1-6:2010 + A1:2013 (Ed. 3.1),
IEC 62366:2007 + A1:2014 (Ed. 1.1)

EN 60601-1-2:2015

ANSI/AAMI ES 60601-1:2005/A1:2012 and C1:2009/
(R)2012 and A2:2010/
(R)2012 CAN/CSA-C22.2 No.60601-1:14

EN 60601-1-2:2015, IEC 60601-1-2:2014 (Ed. 4.0)

EN 55032/EN 55024, FCC part 15B

EN 62368-1: 2014

RoHS-2, REACH, WEEE compliant

Support 12G-SDI, HDMI (Optional),
DP variety signal input

Fanless and ventless design, easy-to-clean medical
grade monitors

Support VESA mount

Application



TECHNOLOGIES TO IMPROVE PATIENT CARE

**4K UHD HEALTHCARE
DISPLAY FOR HIGH
ACCURACY REAL TIME
IMAGING DURING
SURGERY**

4K UHD monitors, implement
the latest in technology, are
making the decision easy.

M101Q8-ME

RUGGED
HEALTHCARE
TABLET COMPUTER
FOR BETTER
PATIENT CARE



WINMATE



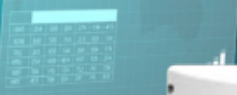


CYTOSINE

GUANINE

ADENINE

THYMINE



Year	Value	Value	Value	Value	Value
2015	100	120	150	180	200
2016	110	130	160	190	210
2017	120	140	170	200	220
2018	130	150	180	210	230
2019	140	160	190	220	240

- Cardiovascular diseases
- Pulmonary disease
- Diseases of the digestive system
- Liver disease
- Diseases of the musculoskeletal system
- Neurological diseases

WINMATE



MULTI-TOUCH COLOR SURGICAL DISPLAY





WINMATE

FC CE

HEALTHCARE PANEL PC

Contact Us

Winmate Inc.

No. 18, Zhongxing S. St.,
Sanchong Dist.,
New Taipei City 241017, Taiwan
Tel +886-2-8511-0288
E-mail sales@winmate.com.tw
Website www.winmate.com

Winmate USA Inc.

2640 Mathews Street,
Smyrna, GA 30080, USA
Tel +1 678-653-8800
E-mail NASales@winmate.com.tw
Website www.winmate-rugged.com

TTX Canada Inc.

150 Wertich Drive, Units 5&6
Cambridge, Ontario, N1T 1N6 Canada
Tel +1-519-621-1881
E-mail Sales@ttx.ca
Website www.ttx.ca

Winmate Morocco

N 59 Rce Moulay Abdelaziz
Avenue Moulay Abdelaziz N 4 Kenitra, Morocco
Tel +212613131944
E-mail kidarik@winmate-rugged.com

Winmate Swiss

Primelco Visual Data AG (PVD)

Neuhofstrasse 25 - CH-6340 Baar
Tel +41 (0)41 767 01 70
E-mail product@primelco.ch
Website <https://shop.primelco.ch/>

Winmate Swiss

Primelco System Device AG (PSD)

Neuhofstrasse 25 - CH-6340 Baar
Tel +41 (0)41 766 27 27
E-mail pos@primelco.ch
Website <https://portal.primelco.ch/>

Winmate Germany

Bgm.-Gradl-Straße 1 D-85232
Bergkirchen-Feldgeding
Tel +49 0 8131 33204-0
E-mail info@tl-electronic.de
Website www.tl-electronic.de/

北京京融电自动化科技有限公司 苏州办事处

215100 江苏省苏州市工业园区唯新路69号
一能科技园3号楼206室
Tel +86-512-6826-6696/6829-6696
E-mail sales@winmate.com.cn
Website www.winmate.com.cn

Winmate JP office / HPC Systems Inc.

LOOP-X 8F,3-9-15 Kaigan,
Minato-ku, Tokyo 108-0022, Japan
Tel +81-3-5446-5535
FAX +81-3-5446-5550
Website www.hpc.co.jp

Winmate Singapore

Anewtech Systems Pte Ltd

62 Ubi Road 1, #04-14 Oxley Bizhub 2,
Singapore 408734
Tel +65 6292 0801
E-mail sales@anewtech.com.sg

Winmate India

3rd floor, S NO 131, Ram Indu Park Rd, Baner
Pune, Maharashtra 411045, India
Tel +86-512-6826-6696/6829-6696
E-mail sales@winmate.com.cn



Follow Us

 / Winmate Inc.

 / Winmate Inc.

 / Winmate Inc.

